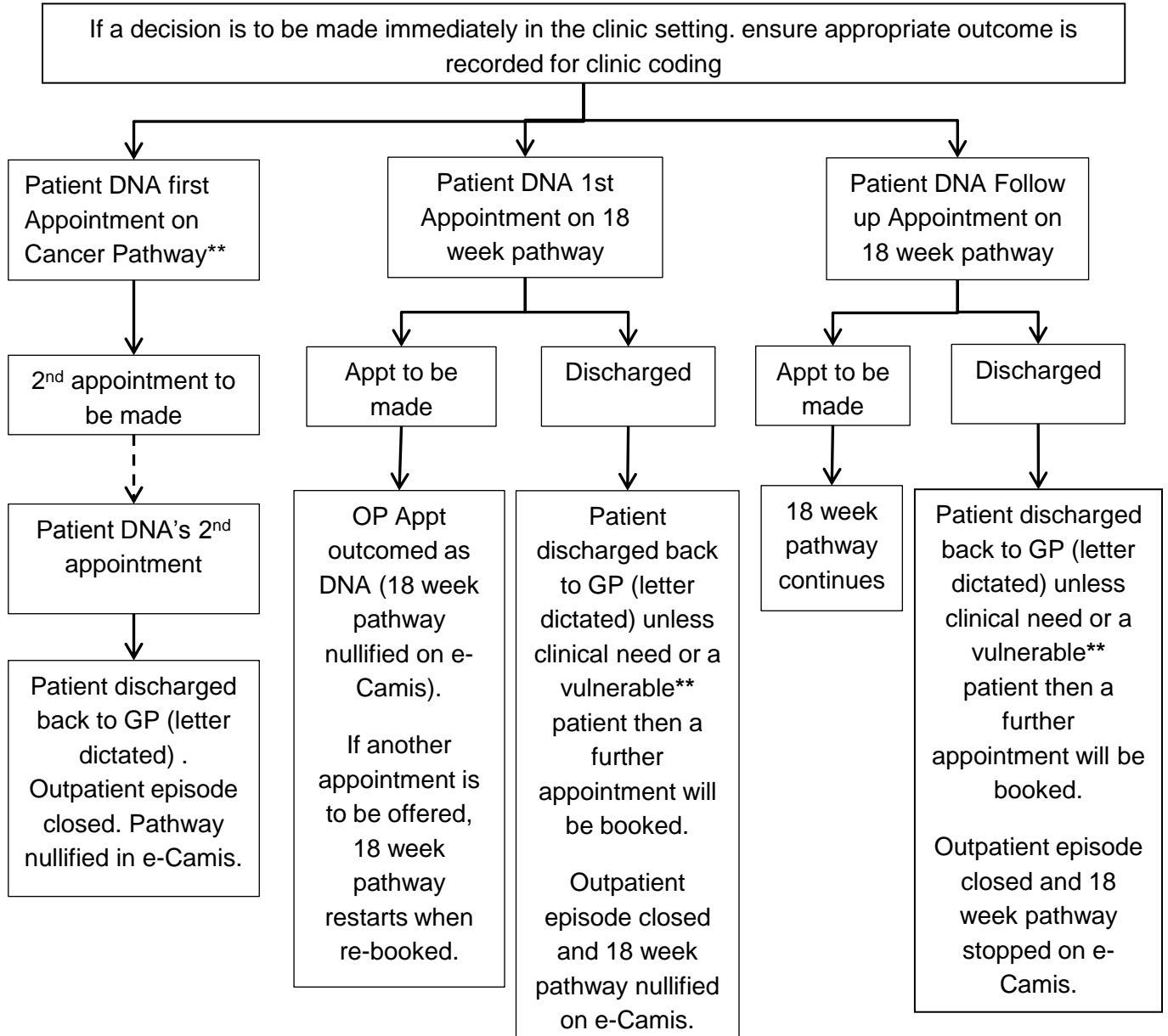


**Outpatient DNA or cancel on day of appointment**

(Refer to Access policy 4.29 for Guidance)



*Important for clinicians to advise the next steps for these patients as giving further appointments will create lengthy waits*

**Guidance:**

- \* Refer to Patient Access Policy - Appendix G – Cancer pathways
- \*\* Please refer to Patient Access Policy section 4.60 for vulnerable patients