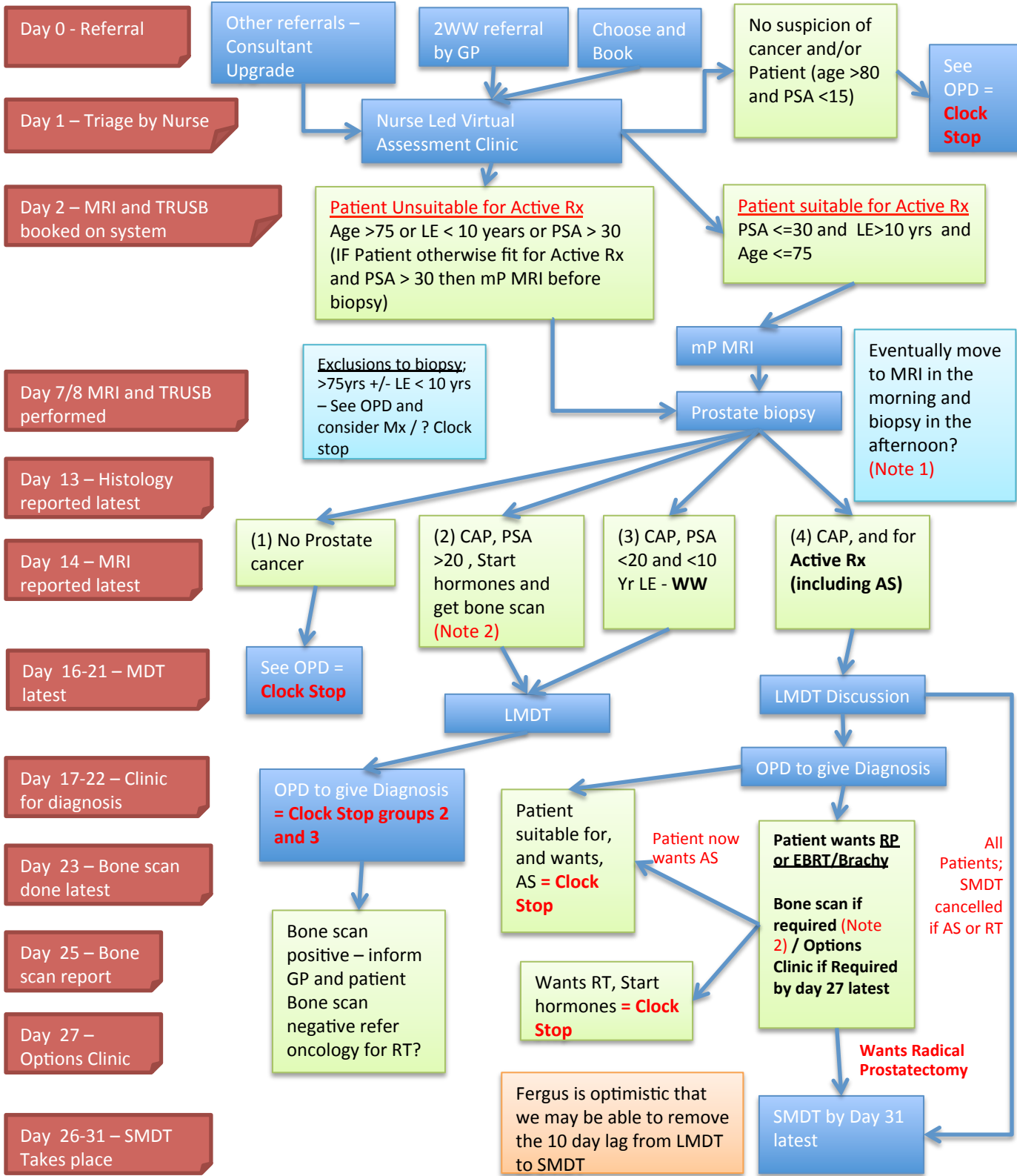


PCH Prostate Cancer Pathway – June 2017



Abbreviations: LE = Life expectancy, CAP = Prostate Cancer, AS = Active Surveillance, WW = Watchful Waiting, mP = Multiparametric, CS=Clock Stop

Notes: (1) – When Transperineal biopsies available will need to have MRI reported instantly, to allow Tp Biopsy that afternoon or following day and GA list available // (2) – Bone scan should be pre-booked from LMDT